

Haus mit Satteldach Variante 113



Wohnfläche Gesamt	98,45 m²
--------------------------	----------------------------

Wohnfläche EG	56,22 m ²
---------------	----------------------

Wohnfläche DG	42,23 m ²
---------------	----------------------

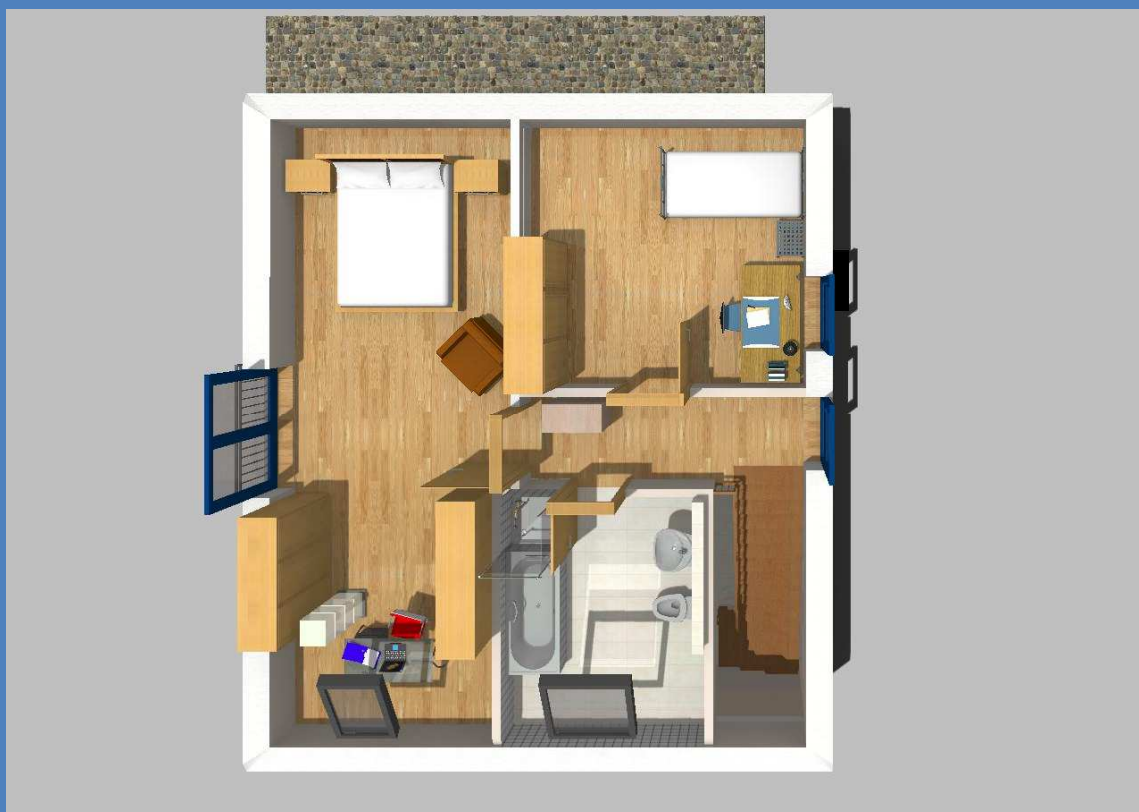
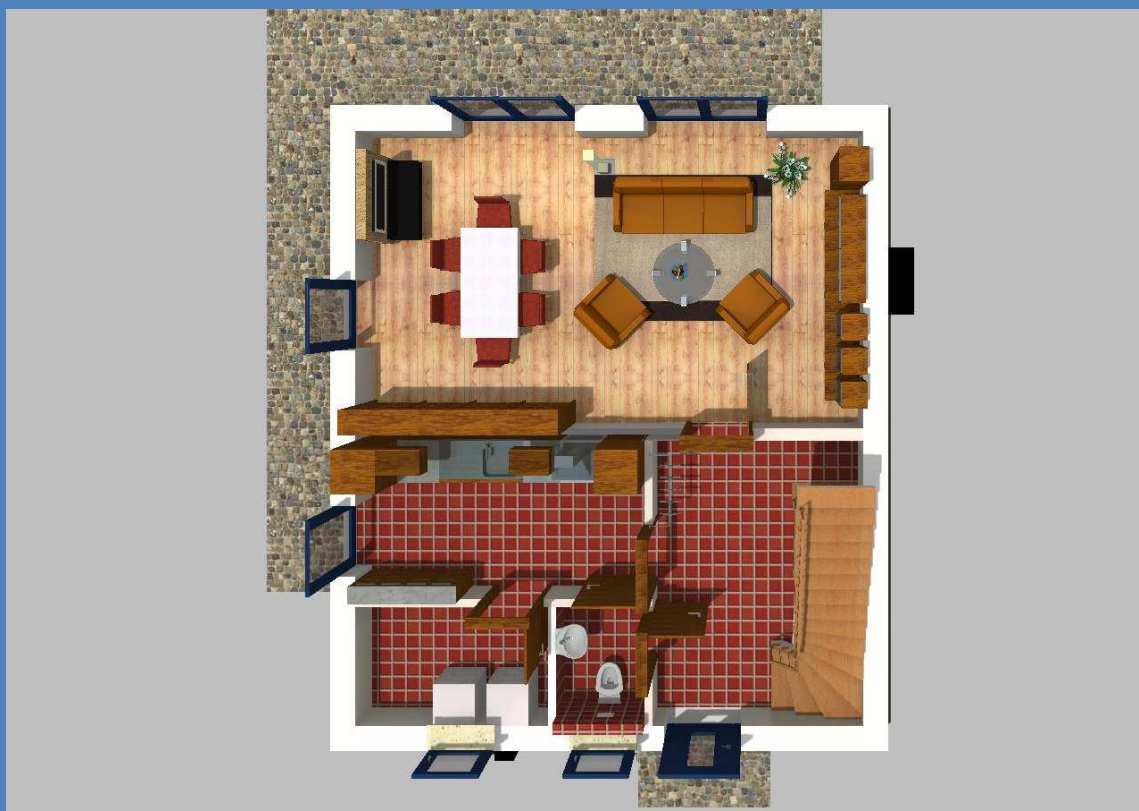
MHPL_SATTEL_113

 **GrundsteinHaus**
Massiv. Ökologisch. Wohngesund.

Haus mit Satteldach Variante 113

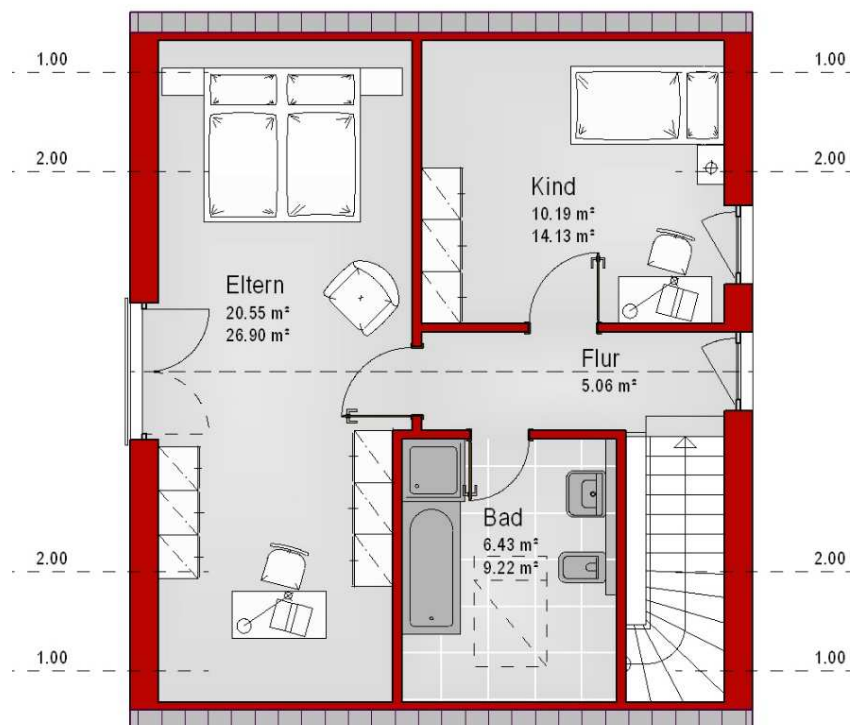
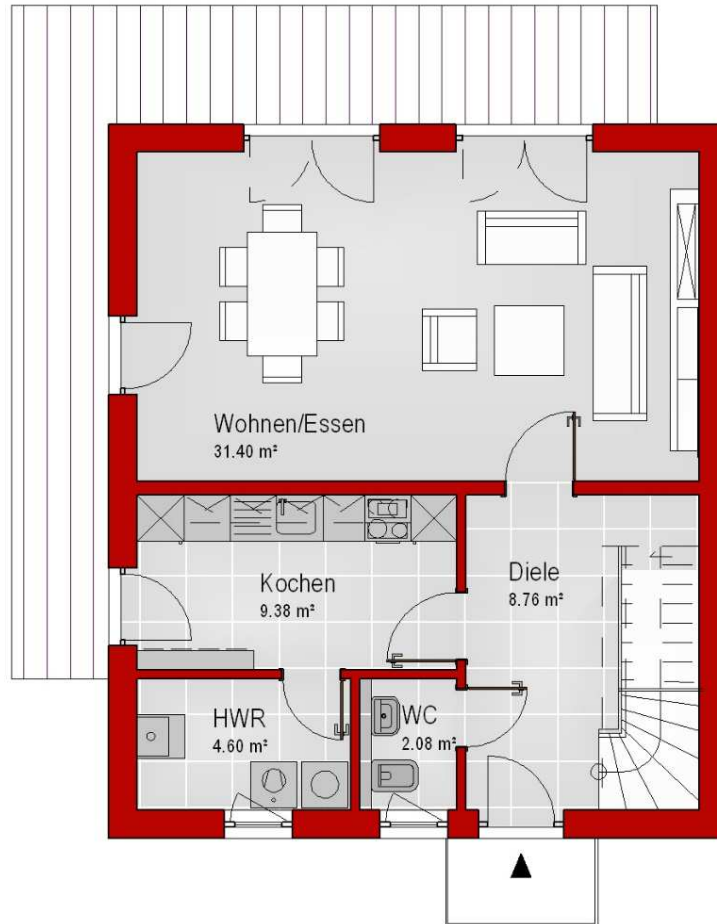


Haus mit Satteldach Variante 113

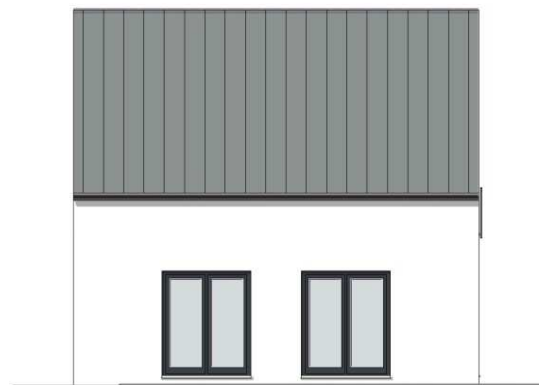
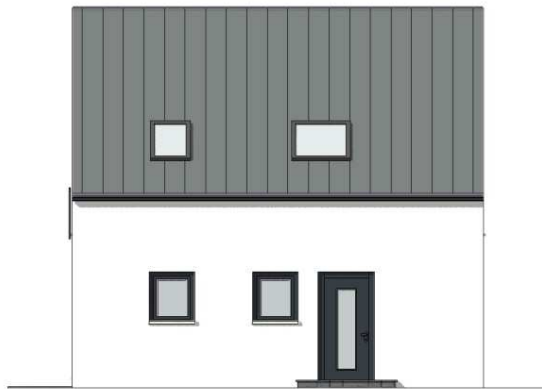


Haus mit Satteldach

Variante 113

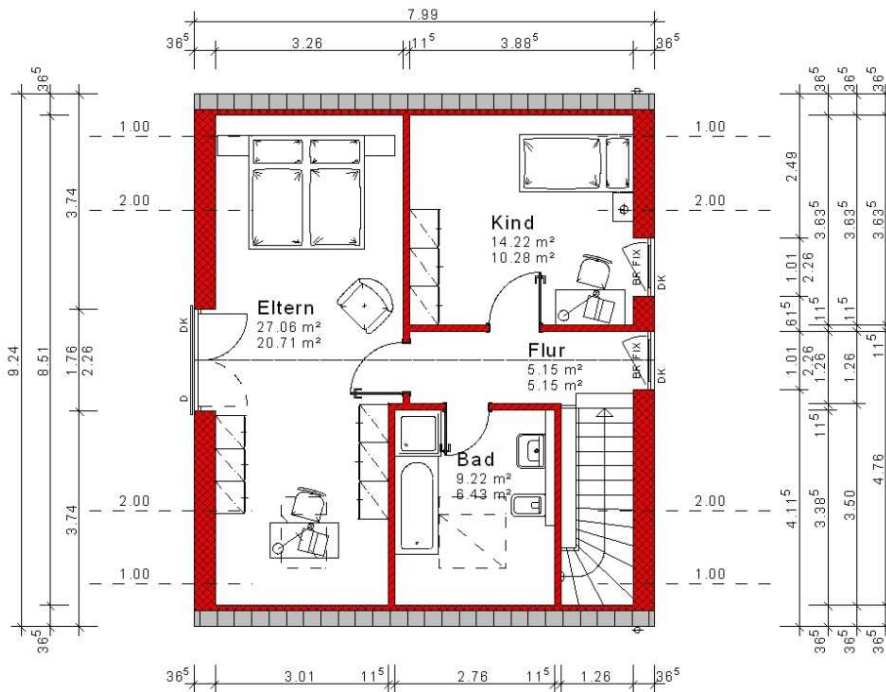
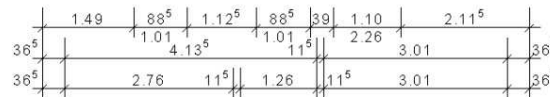
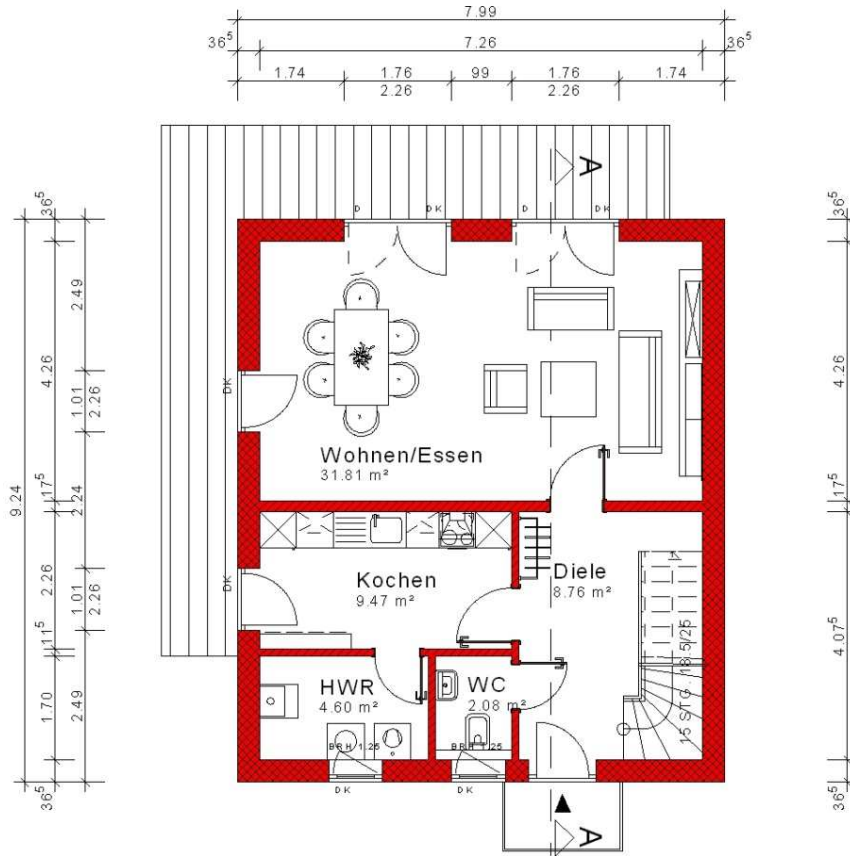


Haus mit Satteldach Variante 113



Haus mit Satteldach

Variante 113



Haus mit Satteldach Variante 113

